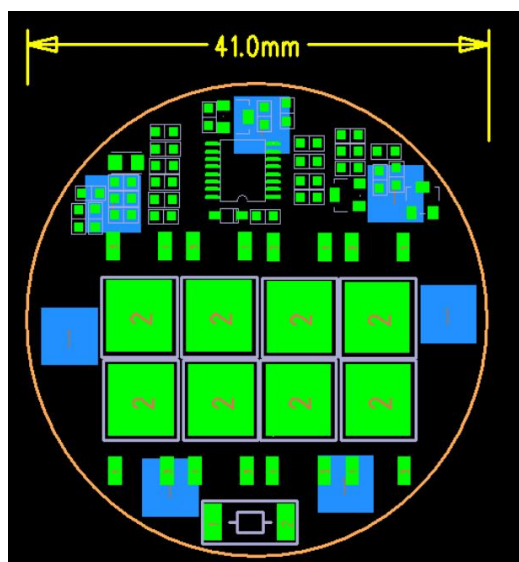


PCM Specifications For 11.1V (3S) Li-ion Battery Packs

Modle: LWS-4S20A-998 (3S)

No.	Test item		Criterion
1	Voltage	Charging voltage	DC: 12.6V CC/CV
		Balance voltage for single cell	/
2	Current	Balance current for single cell	/
		Current consumption	≤50μA
		Maximal continuous charging current	20A
		Maximal continuous Discharging current	20A
3	Over charge Protection	Over charge detection voltage for single cell	4.25±0.03V
		Over charge detection delay time	500mS—1500mS
		Over charge release voltage for single cell	4.15±0.1V
4	Over discharge protection	Over discharge detection voltage for single cell	2.7±0.08V
		Over discharge detection delay time	1800mS—2500mS
		Over discharge release voltage for single cell	3.0±0.1V
5	Over current protection	Over current detection voltage	0.10±0.025V
		Over current detection current	70A±20A
		Detection delay time	50ms—150ms
		Release condition	Cut load,automatically recover
6	Short protection	Detection condition	Exterior short circuit
		Detection delay time	200-500us
		Release condition	Cut load,automatically recover
7	Resistance	Protection circuitry (MOSFET)	≤50mΩ
8	Temperature	Operating Temperature Range	-40~+85℃
		Storage Temperature Range	-40~+125℃



Remark:  
 Charge, Discharge at same port  
 P+=B+/Charge+/Discharg+  
 P-=Charge-/Discharge-

\*Note: Characteristics subject to change without notice.